



TOPIC/OBJECTIVE:
Flow Chart Proof

CONTENT/CLASS:
Geometry

NAME:

CLASS/PERIOD: 4

DATE: 11/16/15

ESSENTIAL QUESTION: How can I organize Similarity info?

QUESTIONS:

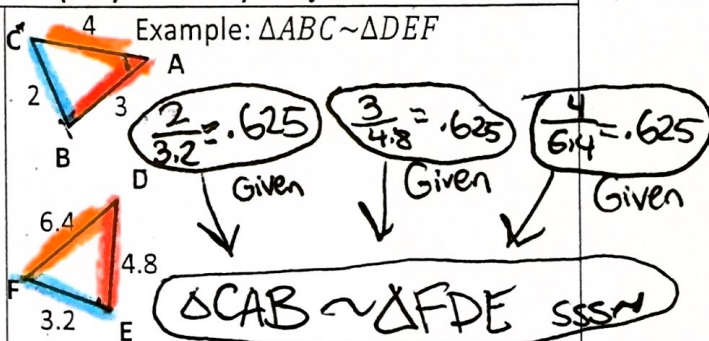
NOTES:

Similarity Flowchart Toolkit

For all flow charts you need fact bubbles that point towards a conclusion bubble. In the conclusion bubble, you name the triangles that are similar. The order of letters and notation is important.

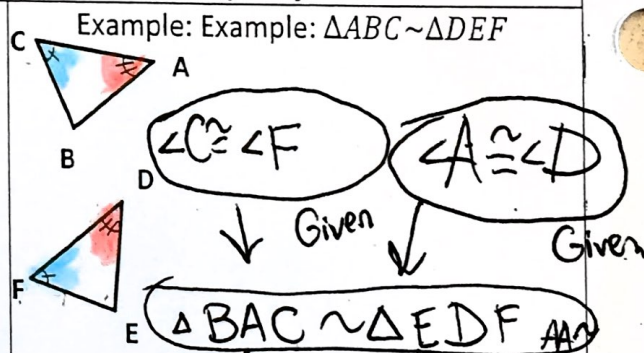
Side-Side-Side (SSS) Similarity Conjecture

In a SSS~ situation, you need 3 fact bubbles, one for each pair of sides.



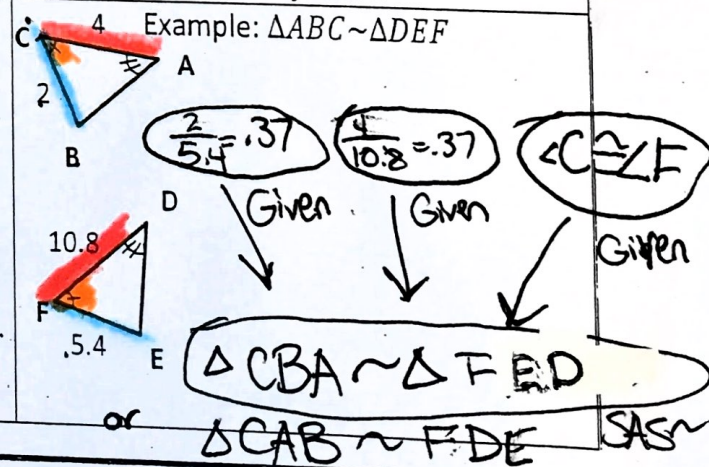
Angle-Angle (AA) Similarity Conjecture

For AA~, you need 2 fact bubbles, one for each pair of congruent angles.



Side-Angle-Side Similarity Conjecture

For SAS~, you need 3 fact bubbles, one for each pair of sides and the included congruent angle.



SUMMARY: