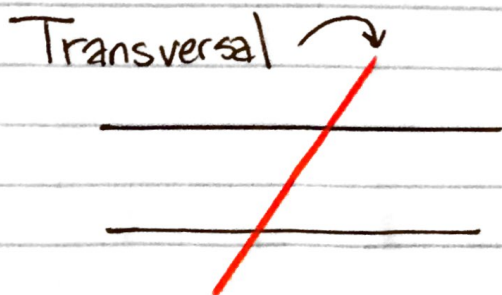


Line and Angle Toolkit

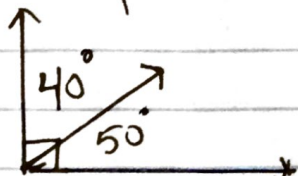


line that crosses 2 or more lines

Congruent \cong

equal length or equal angle measure

Complementary



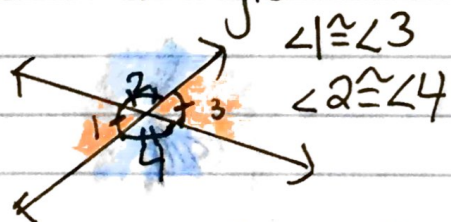
2 angles that add up to 90°

Supplementary



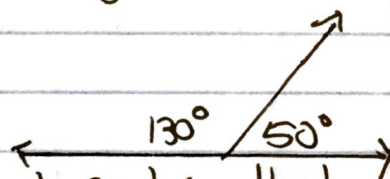
2 angles that add up to 180°

Vertical Angles



Angles opposite of each other are \cong

Straight Angle (Linear Pair)



2 adjacent angles that create a line, (supplementary)

Corresponding Angles



When a transversal crosses 2 ~~parallel~~ parallel lines, corresponding \angle s \cong
 $\angle 1 \cong \angle 5$, $\angle 2 \cong \angle 6$, $\angle 3 \cong \angle 7$, $\angle 4 \cong \angle 8$

Triangle Angle Sum Theorem

All angles in a triangle add up to 180°

