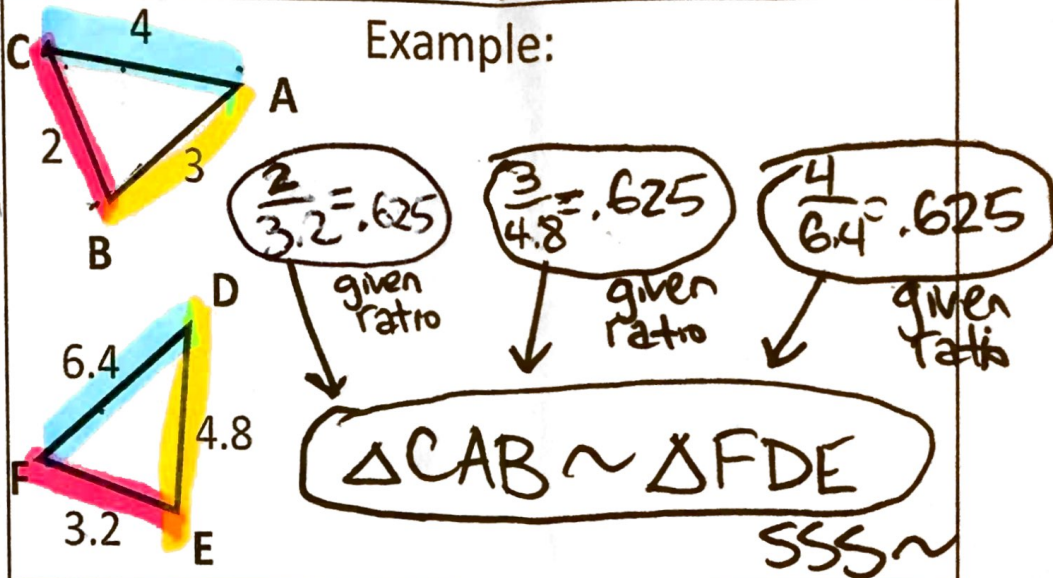


# Similarity Flowchart Toolkit

For all flow charts you need fact bubbles that point towards a conclusion bubble. In the conclusion bubble, you name the triangles that are similar. The order of letters and notation is important.

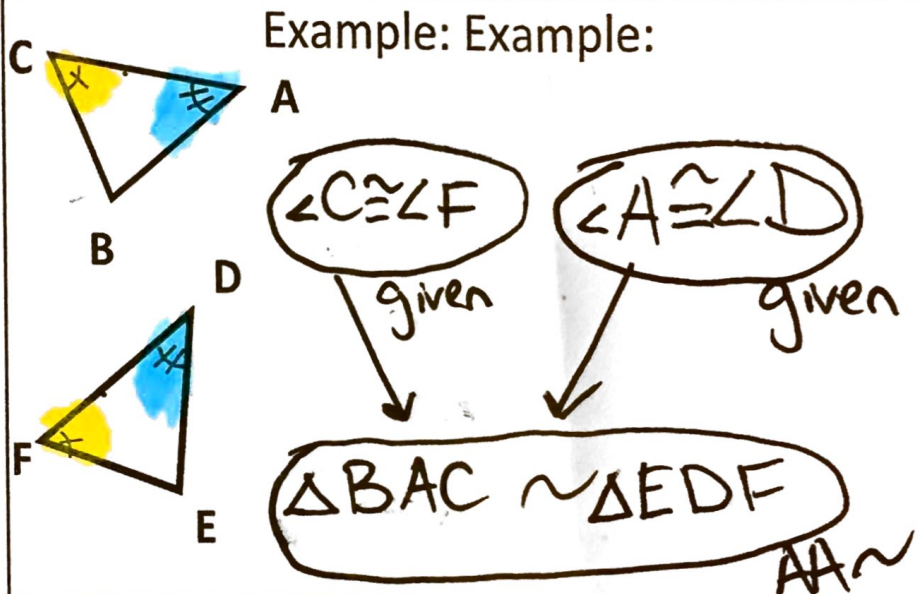
## Side-Side-Side (SSS) Similarity Conjecture

In a SSS~ situation, you need 3 fact bubbles, one for each pair of sides.



## Angle-Angle (AA) Similarity Conjecture

For AA~, you need 2 fact bubbles, one for each pair of congruent angles.



## Side-Angle-Side Similarity Conjecture

For SAS~, you need 3 fact bubbles, one for each pair of sides and the included congruent angle.

