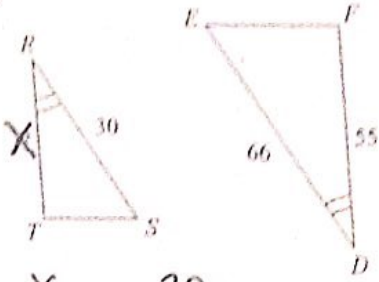


Find the missing length. The triangles in each pair are similar.

4)

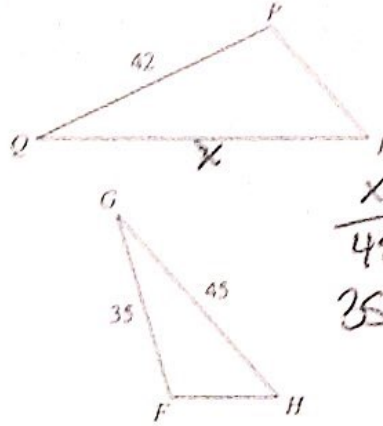


$$\frac{X}{66} = \frac{30}{66}$$

$$66x = 11650$$

$X = 25$

5)



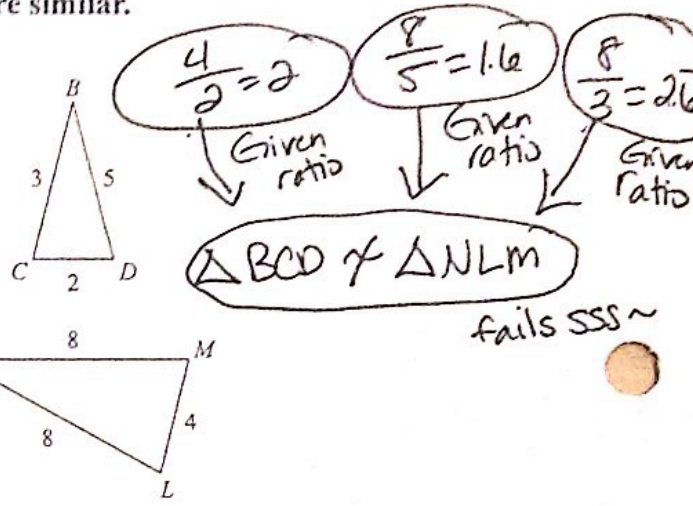
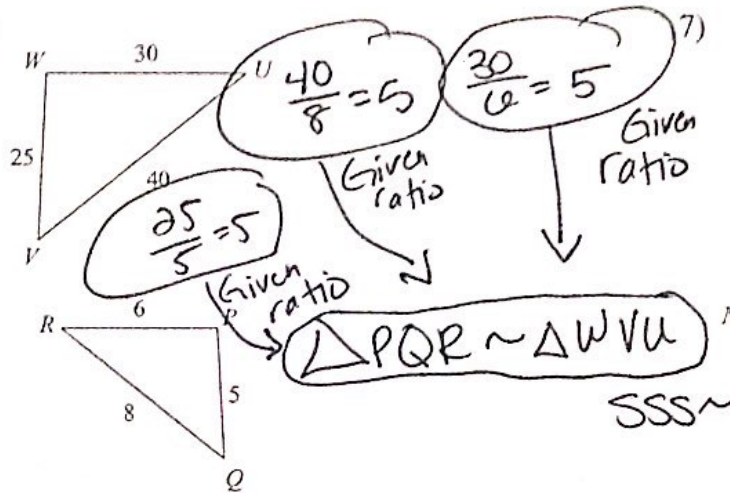
$$\frac{X}{45} = \frac{42}{35}$$

$$35X = 1890$$

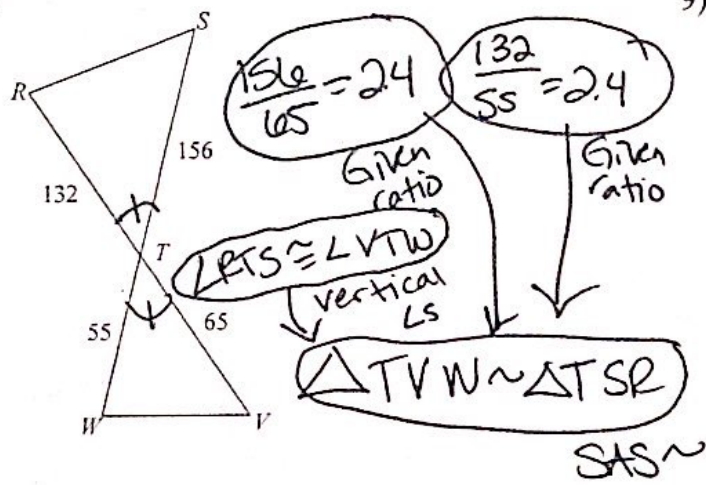
$X = 54$

Make a flowchart that shows whether or not the triangles are similar.

6)



8)



9)

