
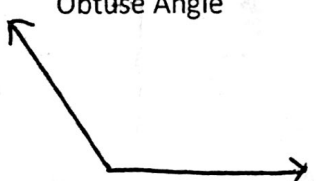
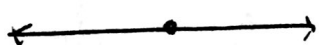
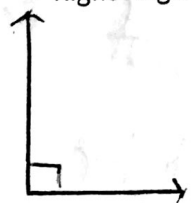
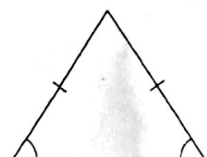


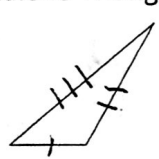


ANGLES, TRIANGLES AND QUADRILATERALS TOOLKIT

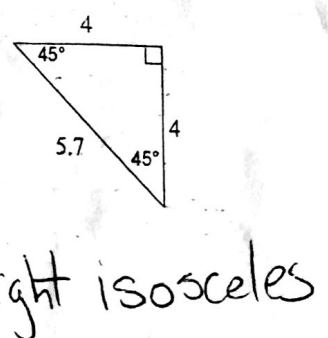
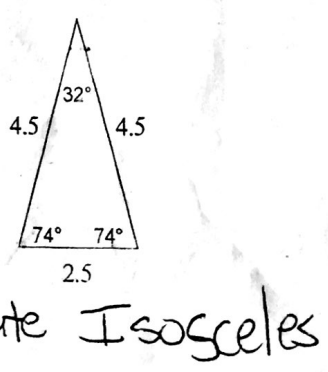
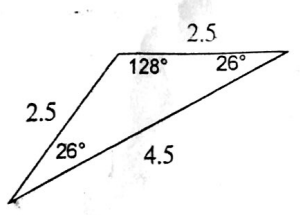
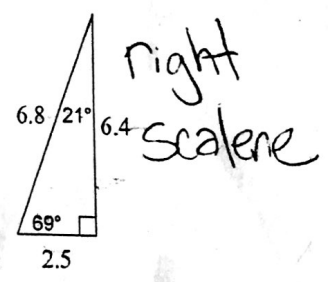
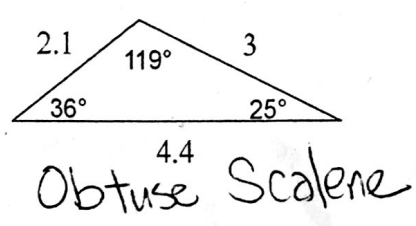
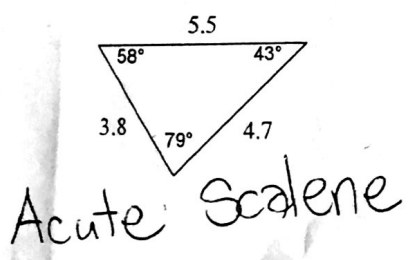
For each shape or angle below, draw a diagram and state all you know about the angles, sides and/or diagonals of the shape.

<p>Acute Angle</p>  <p>Angle Less than 90°</p>	<p>Obtuse Angle</p>  <p>Angle more than 90° but less than 180°</p>	<p>Straight Angle</p>  <p>Angle of 180°</p>
---	---	--

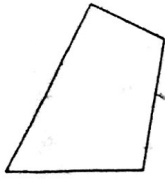
<p>Right Angle</p>  <p>Triangle with 90° Angle</p>	<p>Isosceles Triangle</p>  <p>Triangle with 2 \cong sides and 2 \cong angles</p>	<p>Equilateral Triangle</p>  <p>Triangle with all sides \cong and each angle is 60°</p>
--	---	---

<p>Right Triangle</p>  <p>Triangle with 90° Angle</p>	<p>Scalene Triangle</p>  <p>Triangle with 3 different side lengths</p>	<p>Sum of the interior angles of a triangle is 180°</p>
--	---	---

Examples of labeling triangles using sides and angles

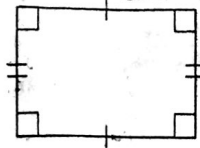


Quadrilateral



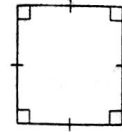
General Term for a 4-sided figure

Rectangle



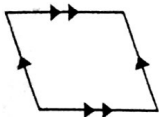
- a quad. with 4 right angles
- a parallelogram with 4 right angles
- opposite sides \cong

Square



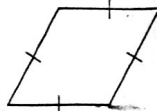
- quad with 4 right angles
- rhombus w/ 4 right angles
- rectangle with \cong sides

Parallelogram



- quad with 2 pairs of parallel sides
- opposite sides \cong
- opposite angles \cong
- consecutive angles supplementary

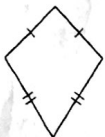
Rhombus



- Parallelogram with \cong sides

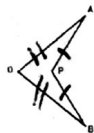
Sum of interior angles of quadrilateral 360°

Kite



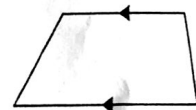
- 2 pairs of adjacent \cong sides

Inverted Kite



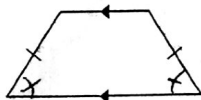
- 2 pairs of adjacent \cong sides

Trapezoid



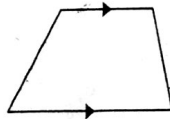
- 1 pair of parallel sides
- parallel sides - bases
- non-parallel sides - legs

Isosceles Trapezoid



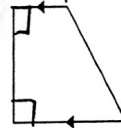
- trapezoid with \cong legs
- base angles are \cong

Scalene Trapezoid



- trapezoid with all sides different lengths

Right Trapezoid



- trapezoid with 90° angle.